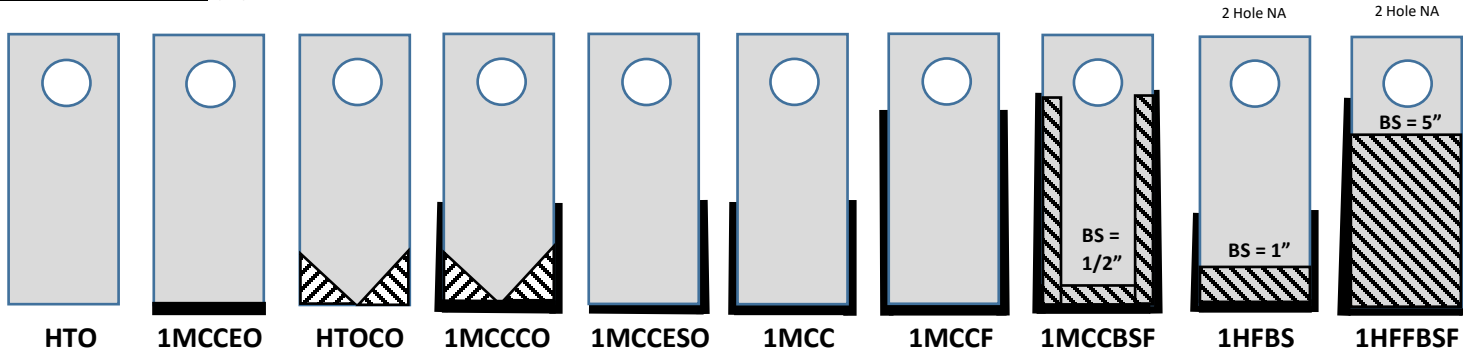


RW MANUFACTURING

PH: (800) 866-6455, FAX: (870) 673-6131

HAMMER STYLES (A):

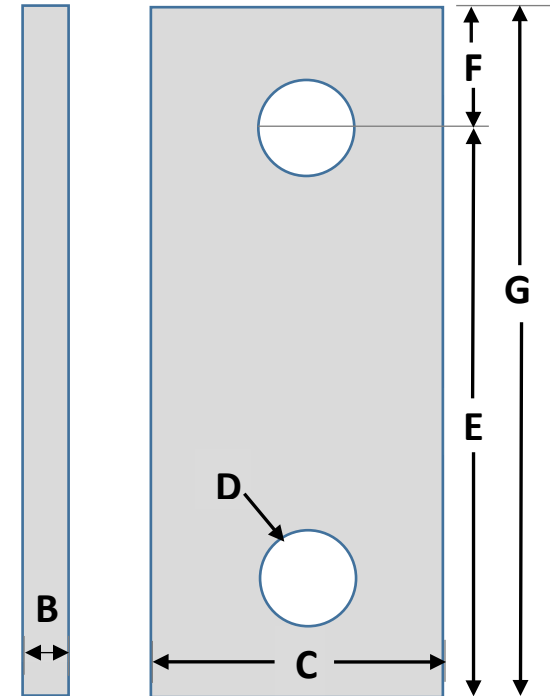


Most Hammer Styles available with either 1 or 2 Holes. Please provide your requirements within Hammer Specifications below (D).

Options: Most RW Customers require a Medium Grit Hardfacing and Single pass of Hardfacing material. Double pass and Fine Grit are available. Please specify any special requirements within "Additional Requirements".

HAMMER SPECIFICATIONS:

- (A) CHOOSE HAMMER STYLE (from above): _____.
- (B) THICKNESS (inch): _____.
- (C) WIDTH (inch): _____.
- (D) HOLE DIAMETER (inch): _____.
- QUANTITY of HOLES PER HAMMER? (CHECK only one) 1 HOLE , or 2 HOLE
- (E) SWING LENGTH (inch): _____.
- (F) LENGTH FROM CENTER OF HOLE TO END OF HAMMER (inch): _____.
- (G) OVERALL LENGTH (inch): _____. HAMMERMILL MODEL: _____.
- (H) QUANTITY OF HAMMERS PER SET: _____.
- (I) BALANCE REQUIREMENTS (i.e., 4 rows of 12): _____.



ADDITIONAL REQUIREMENTS: